



Southend
*excelling in care
enhancing lives*



NEWSLETTER SPRING 2025

MATTERS

www.southendcare.co.uk reception@southendcare.co.uk

Message from Peter Thompson - Managing Director

Hopefully, people have been able to make the most of the warm dry spring and early summer, but the lack of rain and heat will have posed challenges which we are seeking to adapt to. There is much change ahead in terms of the social and healthcare world, with the local government review and NHS 10-year plan. Both should give us opportunities to widen our offering to local communities in the coming years, and our work strengthening our business functions of the new website and technology pilots will mean we are well placed for this.

It is always encouraging to see the creativity and range of activities the people we support are engaging in, making essential community links, and positively representing the abilities of the people we support.

It is good to welcome new services to the Southend Care family, and we welcome the people we support and staff from Norvick House service, a supported living service for people with learning disabilities in the city who also provide community outreach. As ever the commitment of our staff is what makes our success, and on behalf of the board we express our thanks for their continued hard work and support.



On the 17th June our new website for Southend Care Ltd went live. The new website has several new exciting features that will make a visit to our website more engaging and accessible.

With our new accessibility bar at the top of each page that easily adjusts text size and colour of the site was added to make the website more usable and accessible for people with disabilities. You will also notice the new announcement banner at the top of the page; this is so we can communicate latest updates and any important news immediately.

We have a full News and Media page where you can read Blogs, Testimonial and Case Studies for each service. Our latest Newsletters will also be available to read on this page. We look forward to all the services using this part of the website to really showcase what they do and how much goes on across Southend Care.

There are several new features on the Brook Meadows House page, including the new brochure, new promotional video and FAQ's and useful links for any care seekers that are interested in staying in the Care Home.

Improvements have also been made to our Careers Page along with a new Recruitment video for Southend Care showing what we have to offer you if you were to work with us. Shared Lives have a new page for recruitment; this opens up for potential new carers an easy route to finding the information they need.

Please visit www.southendcare.co.uk to see all of the new features above. You can also scan the QR code below with your camera on your phone to view.



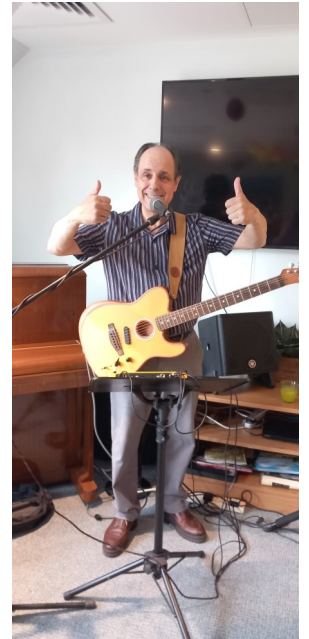
Picture – Website launch at The Board
Away day on 17th June 2025

If you would like to know more about any of our services or for latest news, recruitment or information please take a look at our website www.southendcare.co.uk



Brook Meadows House

Some of our activities for Care Home Open Week included Rainbow Day, a picnic in the garden and a singalong with Peter George



Left and Below : Celebrating

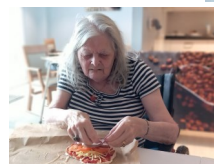
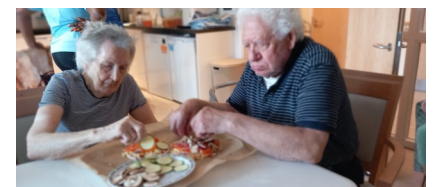
VE DAY



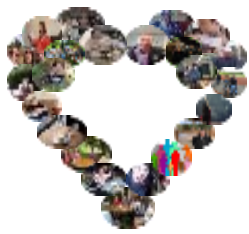
Below: We had a lovely Eurovision day. We celebrated with a quiz, karaoke and a European tasting session



Left: A group of residents had a trip to Old Leigh, they loved the museum, had a walk along the front and ate fish and chips.



Left and Above: Pauline, Sylvie and Giranno making pizzas on National Italian Day

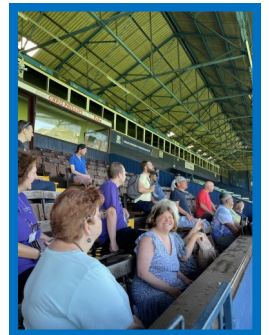


Southend Shared Lives



Southend United hosts Football Tour for Shared Lives Week

As part of this year's Shared Lives Week celebrations, Southend United Football Club opened its doors to a behind the scenes tour, welcoming carers and service users. The visit offered a unique opportunity to explore the roots of the local club. We got to see everything from the player's tunnel to the home and away changing rooms, including the exact seat Cristiano Ronaldo sat in when Southend played against Manchester United. Shared Lives Week continues to shine a light on the power of connection through local partnerships, creating meaningful memories.



Shared Lives Week was marked in true community spirit at Porters, celebrating all the incredible individuals who make Shared Lives what it is. Thank you to The Mayor of Southend on Sea and everyone who attended. A special highlight this year was when Thomas and Peter took the floor to deliver a heartfelt presentation to Jennie.

We also had a raffle with some brilliant prizes generously donated by local businesses. We extend our heartfelt thanks to Adventure Island, ASDA, Caddies Southend, Yoga4all, and Southend Care for their very kind donations and for helping us make this week so memorable.



Project 49

In the Community

Right: We have now purchased a large flower bed at Garons Wellbeing park which will be managed and maintained by our gardening groups for the community to enjoy.



Below: Project 49 hosted Junes Learning disabilities user voice group, the meeting was entitled 'Stand up for Safety' and focussed on gathering peoples views on how safe people feel in the community and included presentation given by Community safety officers.



Left: Project 49's community art groups are working hard on two projects.

1. Refreshing the exterior art work at the Storehouse with colourful murals.
2. Within South Essex Homes Norman Harris house brightening up the corridors with colourful designs.

Right: The whips planted: by Project 49 at Garons recreation ground have taken really well and are thriving. This is part of a project to increase hedgerows in the local area which not only define boundaries but provide an important habitat for wildlife



West Street



Some pictures from our art and craft sessions at Willow mews.

Kateryna (me) organised art session with tenants from West Street. We made some paper bunnies and coloured Easter eggs.



Longmans



A selection of photos from recent events held at Longmans, including their Easter and VE Day celebrations, as well as our regular tenants' coffee morning.

As always, the staff worked hard to decorate the service beautifully and create special moments and lasting memories for the tenants.

You'll also see a picture of Paul, a dedicated supporter of Southend United Football Club.

Paul had the exciting opportunity to travel to Wembley to support his favourite team.

Although the result wasn't in their favour this time, staff showed their support by decorating the communal area in Southend United's colours — a gesture Paul truly appreciated





MAKING IT WORK SUPPORTED EMPLOYMENT

Supported Employment for People with Learning Disabilities

2025 so far.....

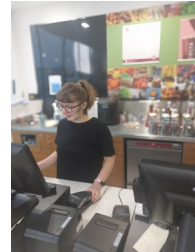
In a world where fewer than 5% of people with Learning Disabilities are in employment, far too many are missing out on the wider social networks, better emotional and physical health, and increased independence that a job can provide.

Making It Work currently support 141 adults with a learning disability in Southend find, secure and maintain work. Either paid, voluntary or on a work initiative scheme.

To help create a future where everyone is seen, heard and valued in the world of work in the first 6 months of this year the team have conducted 251 workplace visits. We have supported 30 paid job applications and supported at 10 paid job interviews.

6 of our service users found paid work and a further 10 have been successful in securing voluntary placements to further their skills. This required travel training, online training and job coaching "on the job".

We are also currently in the process of securing a work initiative scheme with a local high end hotel and supporting with training in the Barista Meadows café at Brook Meadows House.



Micaela's Success

Micaela has been supported by the team in various voluntary catering positions since 2018 gaining invaluable experience and building her confidence.

With our support she has now secured permanent employment for S.E.P.S. at the Civic Centre Costa franchise.

Well Done Micaela!



We are delighted to announce that Clare Levy (left) has joined the team as an Employment Support Worker and will be working Monday - Wednesday.

E: Clarelevy@southendcare.co.uk

M: 07901 101465

Contact the team—MakingItWork@SouthendCare.co.uk - 01702 212754 or 01702 215182

Employee for the Spring Season is Sandra Harris



Congratulations to this seasons winner Sandra Harris – Head Housekeeper in Brook Meadows House for going above and beyond not only in Brook Meadows House but with the cleaning of Viking as well. Her team say they feel really supported and that she ensures everyone feels valued.

This seasons runner up: (right) was Seweryn Zawarynski – Night Team Leader in Brook Meadows House, for being kind and respectful to residents and friendly and professional to staff at all times. His colleagues said he has unwavering dedication, compassion and exceptional leadership



The following people also received nominations this month: Project 49 - Chris Ottaway, Keren Hollier and Hayley Holton. SRS - Connie Wazir and Pam Johnson. Head Office - Clare Petchey. Brook Meadows House - Teresa Hearn, Sharnie Hamilton and Sophie Maynard. Viking - Samantha Radley and Callum Clarke, West Street - Michael Maguire, Michelle Coe, Matthew Coe, Susan Hesketh, Lorraine Baldree, Charlotte Newton, Toni-Ellen Bennet. All Staff at West Street

Well done to all the winners and nominees!

Our Summer Employee of the Season nominations are now open

Kelly Vine



Shauna Bedstead



CONGRATULATIONS
on the completion of your care
certificates

Welcome to our New Starters

We wish you all the best in your new role!

Head Office

Paul Gibbs—HR Assistant Fixed Term Contract

Brook Meadows House

Chimezie Umendu—Bank Complex Healthcare Assistant

Michaela Sheppard—Complex Healthcare Assistant

Wonderful Maruza-Bank Complex Healthcare Assistant

Megan Claydon-Complex Healthcare Assistant

Elizabeth Shoremekun-Night Complex Healthcare Assistant

Making It Work

Clare Levy—Employment Support Worker

Erin Woodley-Casual Bank Support Worker

Viking

Kristina Kristova—Bank Support Worker

Hailey Ortiz—Claxton—Bank Support Worker

Stephanie Christie—Bank Support Worker

SRS—Southend Reablement Service

Nusrat Hasan—Community Carer

Michael Gillan—Community Carer

Angeline Stell—Community Carer

Naomi Wilson—Bank Community Carer

Jonathan Phiri—Community Carer

Hannah Collis—Bank Community Carer

Oluwole Fowokan—Community Carer

West Street

Oyewole Awodiya—Bank Support Worker

Samuel Obhokhan—Bank Support Worker

Sophie O'Brien—Bank Support Worker

Elizabeth Nyanjui—Bank Support Worker

Employee Benefits

Do you enjoy going to the cinema?



Southend Care has negotiated a great deal for all Southend Care Ltd employees!!

Odeon Cinema Tickets – Standard Seats –
For use anytime - £6.03 each

Email hr@southendcare.co.uk stating the number of tickets you would like and your mobile number.



Now Available

Adventure Island Wrist Bands - £18.00 each – saving £17 compared to buying in the park
Available to all Southend Care Employees

Email hr@southendcare.co.uk stating the number of wrist bands you would like and your mobile number.



Staff are reminded about discounts for using the Blue Light Discount Card which will be funded by the Company.

The Blue Light Discount card offers staff a range of local and national benefits and discounts. To apply for a card please visit: www.bluelightcard.co.uk

The cost of the card is £4.99 for 2 years, which all employees can claim back via expenses, by simply showing their card to their manager